

**ib**  **tac**®  
Designfloor

**Biteo**



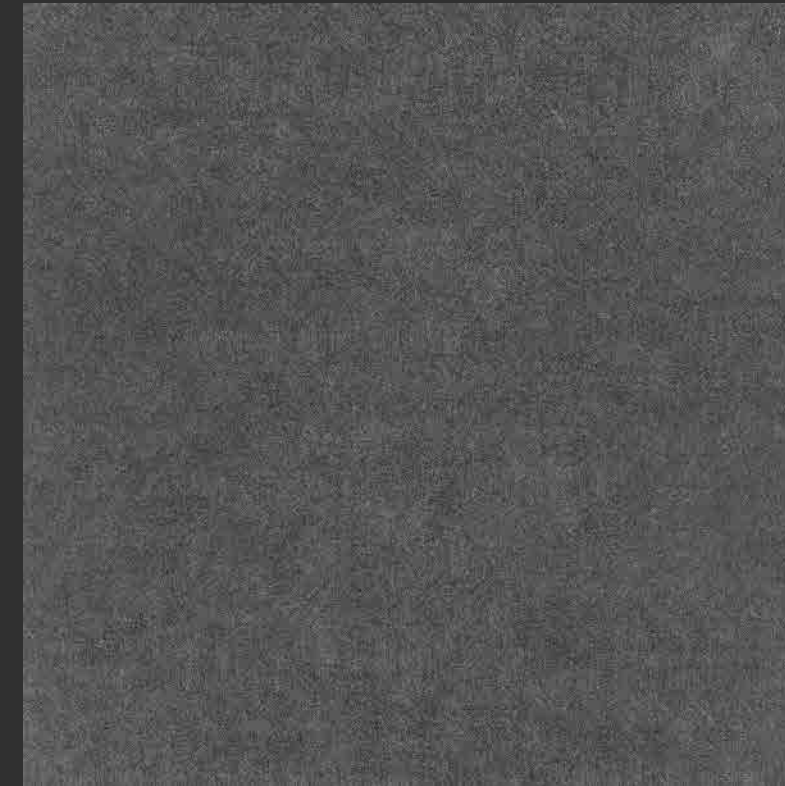
EDITION **2026**



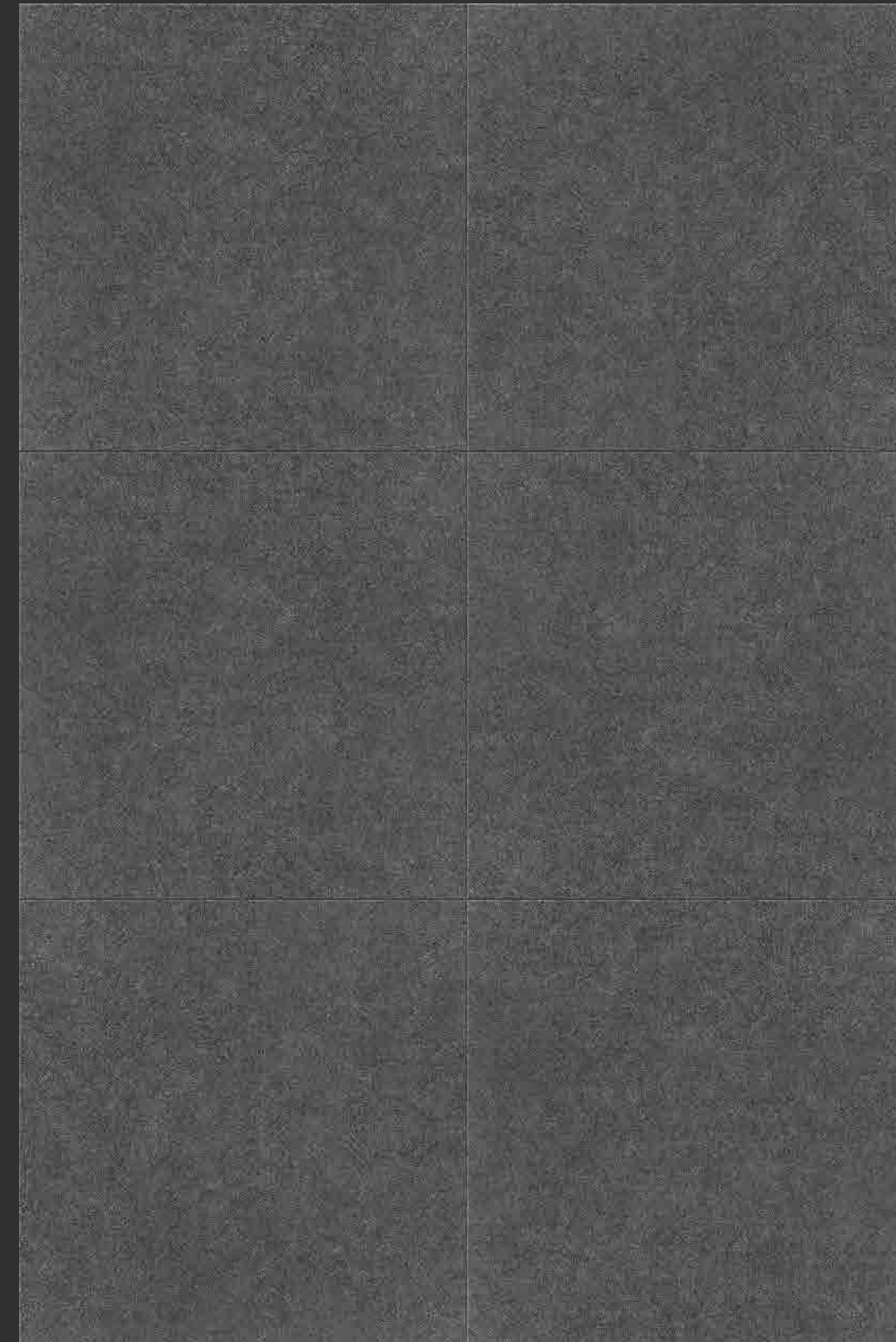
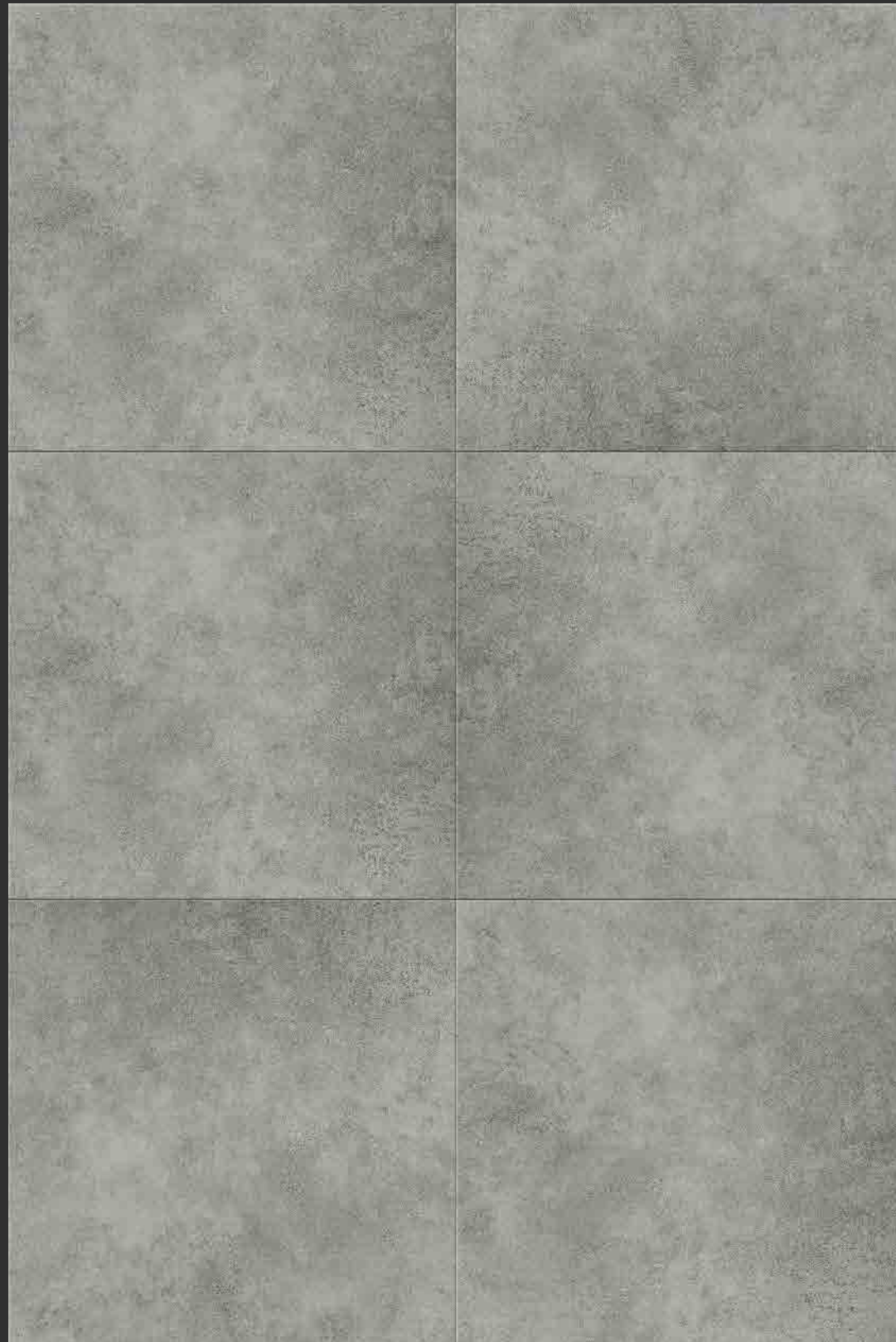
**Zement**  
61x61 cm

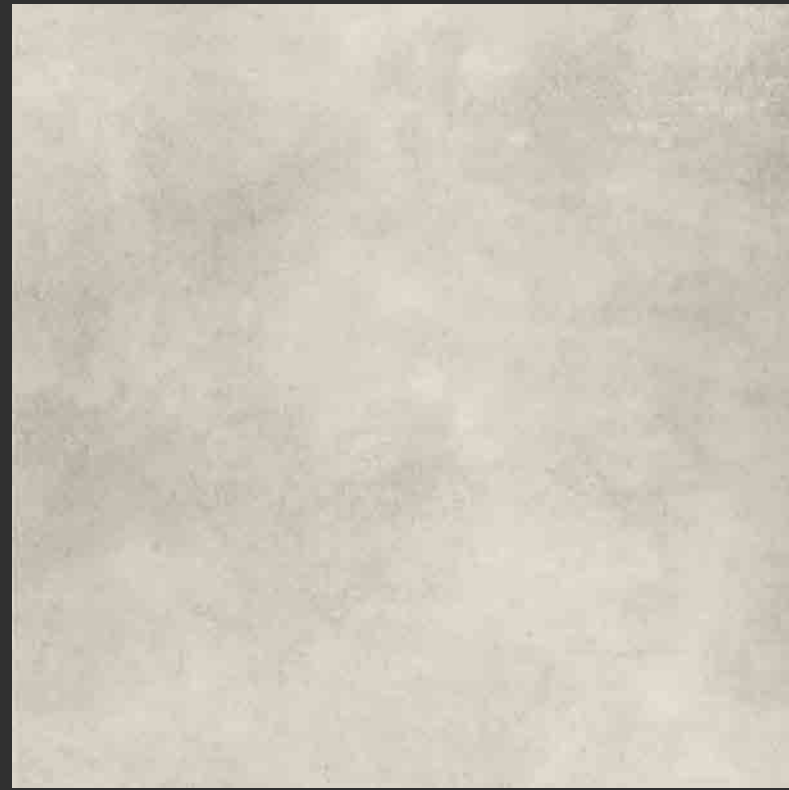


**Beton**  
61x61 cm



**Grafit**  
61x61 cm





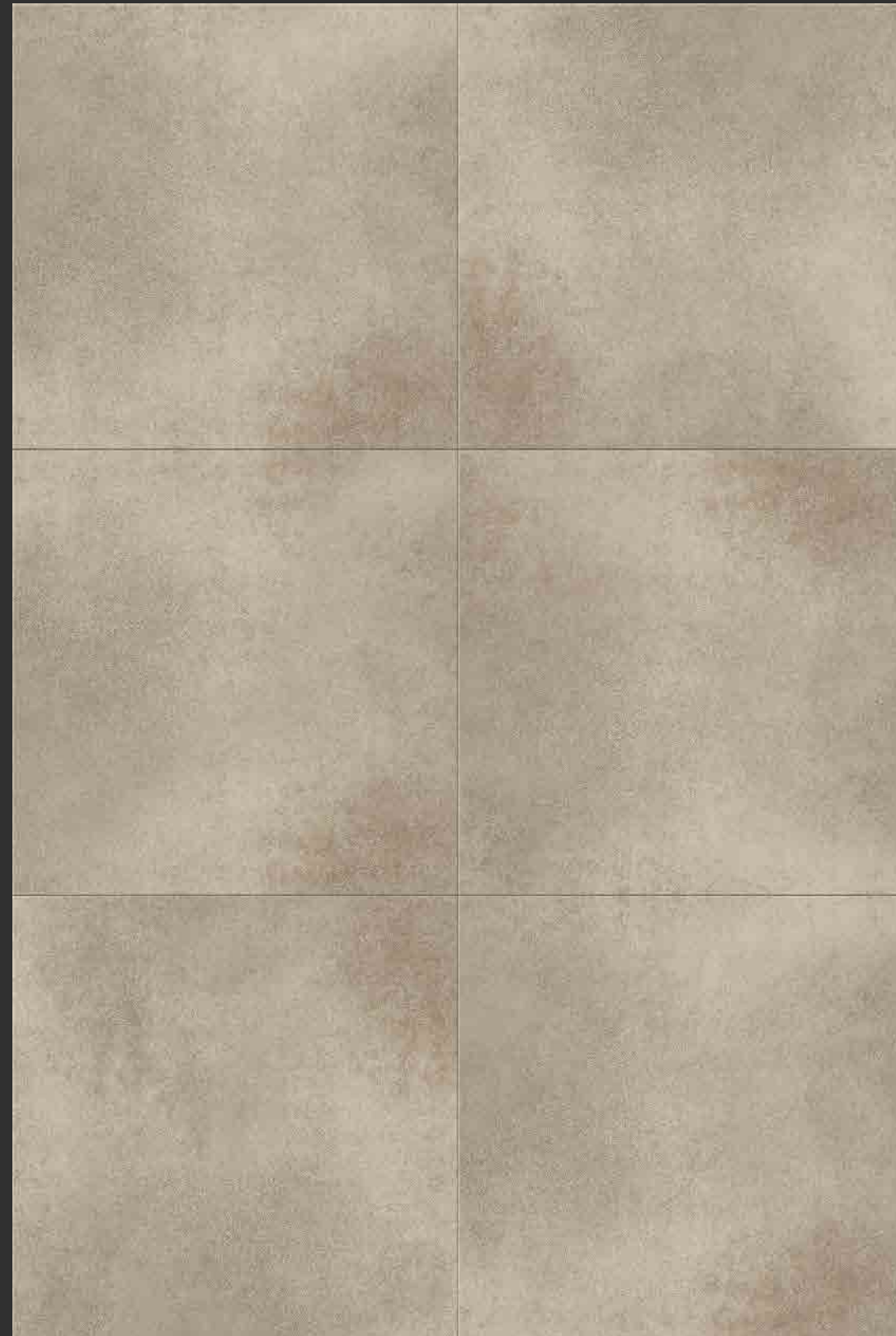
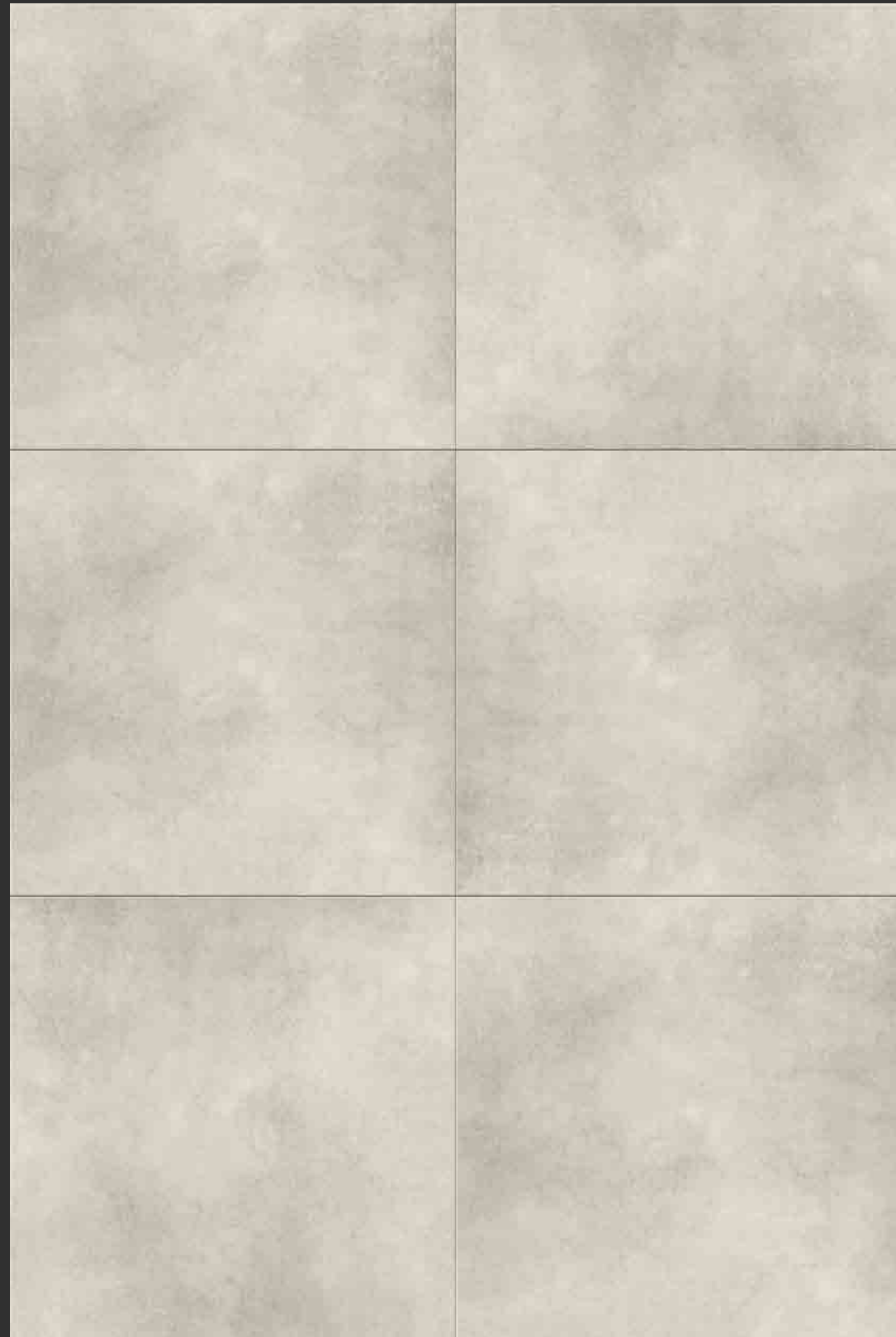
**Marmor**  
61x61 cm



**Sandstein**  
61x61 cm



**Bernsten**  
61x61 cm

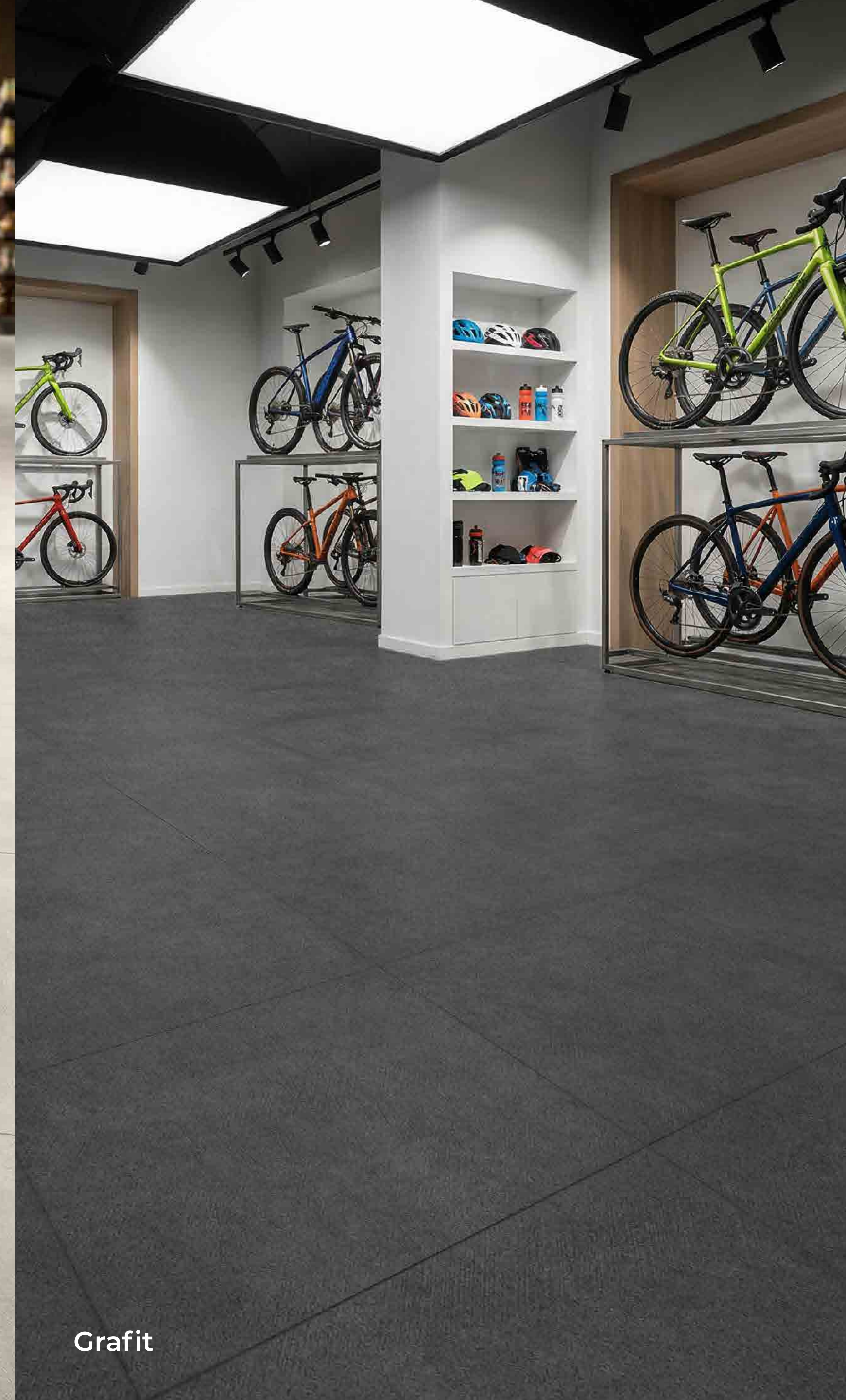




Beton



Marmor



Grafit

## Product structure

Thanks to a unique manufacturing process, Ibotac® can provide extremely realistic imitations of wood and stone. With the certified production process Ibotac® improved the multilayer structure to make the floor extra strong and durable. Combined with a fiberglass cross-linked back with two times glass fleece in the upper part, we achieve outstanding dimensional stability!



**Liquid-tight and floating installation possible on almost all undergrounds**





**Nature Oak**

33 x 61 cm



**Honey Oak**

33 x 61 cm



**Royal Oak**

33 x 61 cm



**Chaming**

33 x 61 cm



**Biege**

33 x 61 cm



**Ebony**

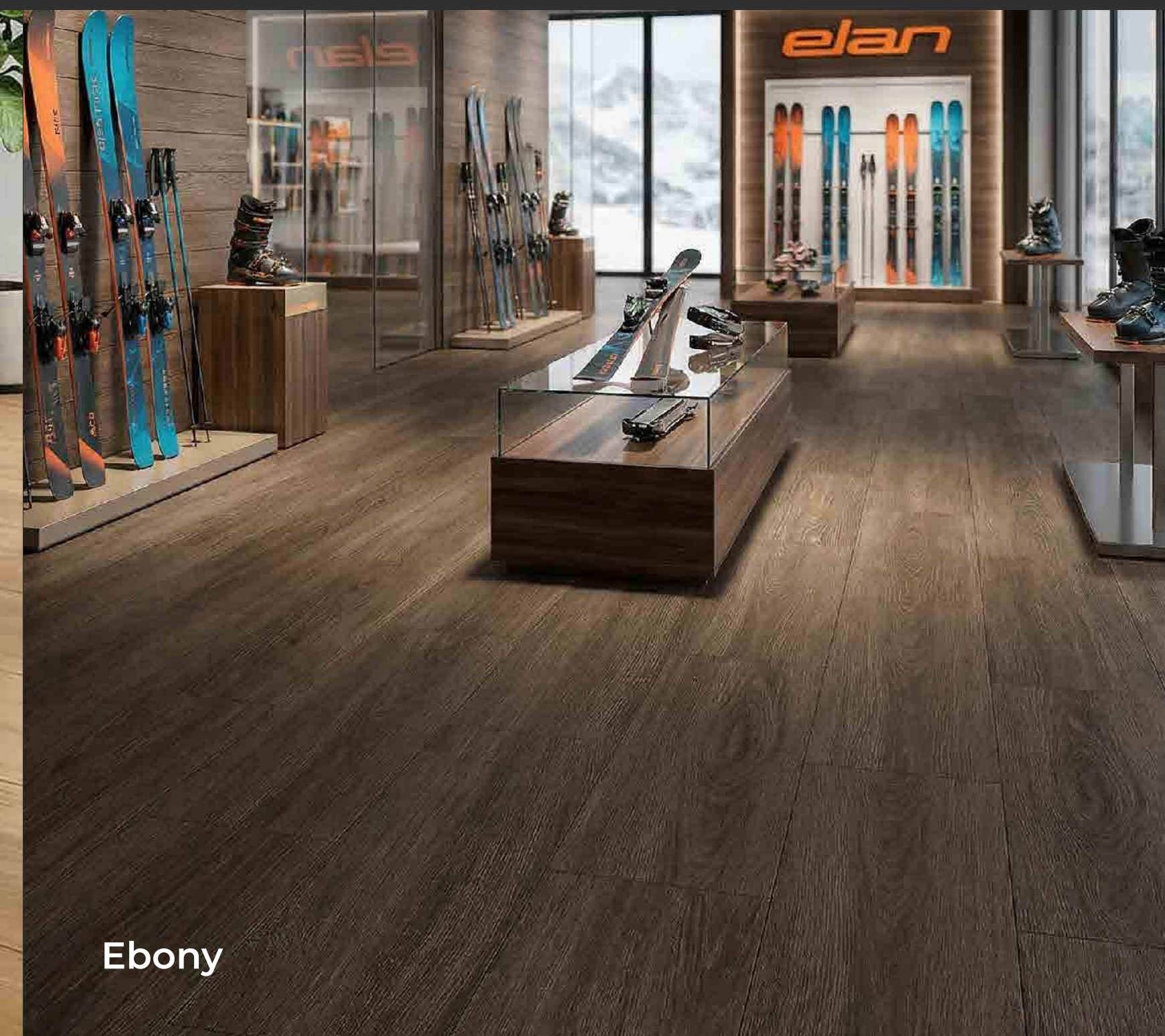
33 x 61 cm



**Nature Oak**



**Royal Oak**



**Ebony**

# BITEO-Designfloor



**offers you numerous advantages compared to conventional solutions:**

- Time-saving: 4 to 8 times faster laying, no empty space, possibly in night work, so the store remains open during the day, without loss of sales or customers
- Cost-saving: usually no priming and filling, installation also on problematic floors
- Material-saving: up to 90 % less waste material
- Flexible: loose / fixed installation allows quick replacement, easy repair
- Can be 100% deconstructed on rental sites, reusable
- Sustainable: wear-resistant, durable, easy to maintain, recyclable
- Extremely wear-resistant
- Can be driven over with pallet trucks and forklifts, etc.
- Factory-provided surface protection thanks to UV cross-linked PUR surface coating
- 16 dB impact sound insulation
- Foot warm, ergonomic material, therefore joint-friendly
- Attractive color palette, own design possible
- Very good price / performance ratio

Even minor remedial work on the floor can significantly disrupt efficient operations, resulting in high costs.

Hollow, broken stone tiles, holey screeds and damp or even oily substrates cause a technical debacle. They severely impair the workflow in sales areas. For this purpose, we offer you an economical and fast solution with the loose-laid floor coverings from Ibotac. Biteo-Designfloor is an extremely resilient and dimensionally stable solution due to the high-quality materials and careful, certified production technology. The Floor coverings can be laid without gluing (even on old tiles). Substrate preparation is reduced to a minimum. You can also renovate individual areas quickly and in an extremely uncomplicated manner, step by step, without any major downtimes.

**You save costs! Due to the proven locking system, the cohesion is stable and durable, even for the highest object stresses.**

**This offers you security in daily use!**

## Technical data

Connection	Click connection concealed
Tile size	66 cm x 33 cm// 61 cm x 61 cm
Thickness of the useful layer	0.55 mm
Total thickness	8.2 mm
Weight	11 kg/m
Material useful layer	Fiberglass reinforced PVC
Material support tile	100% PVC
Surface treatment	Protectonite (PUR)
Surface structure	Design
Slip value	DS / R10
Fire behavior	B1fl-S1
Backside	Drainage knobs
Floorheating	Suitable
Wear behavior	Class T
Operating class	Class 23-33-42
Liquid-tight floor	With the use of joint compound
Useclass	Heavy and light commercial vehicles
Light fastness	>6
Dimensional stability	≤ 0.15
VOC-Emissiones	Certified
Antistatic	<2kV
Furniturepushtest	No cracks, no damage
Impact sound improvement measure	16 dB

**ibotac**

Designfloor

### Environment friendly

-100% recyclable  
at the end of the useful life,  
we can pick up the tiles  
and recycle them

-100% Made in Europa



#### Deutschland

Ibotac GmbH & Co.KG  
Dürener Straße 4 8 5  
5 224 9 Eschweiler  
Fon: +49 (0) 2403 - 80 91 214  
[www.ibotac.de](http://www.ibotac.de)  
[info@ibotac.com](mailto:info@ibotac.com)

**Biteo**